

# 2025 – 2026 School Year Annual Report

## Mission:

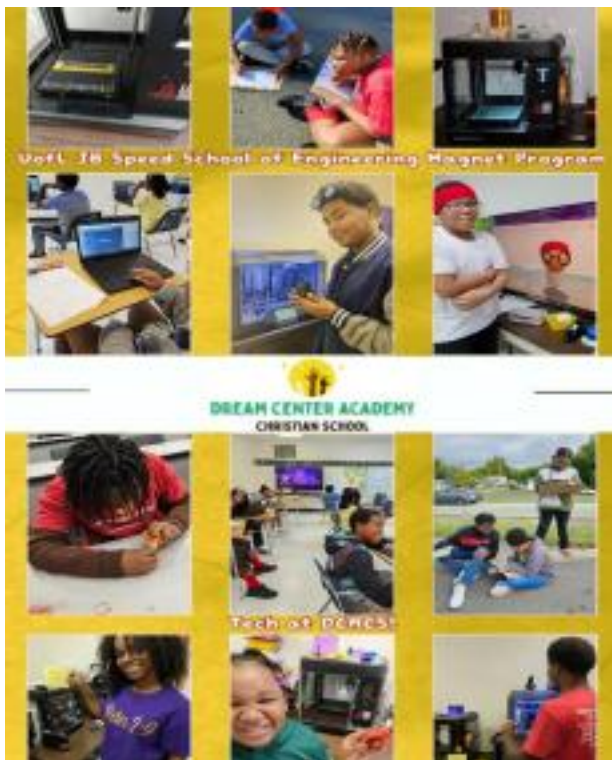
Provide educational excellence and educational choice in Christ for children living in the West End of Louisville, KY that gives them tools to thrive in today’s world - not just survive!

Dear Kingdom Investors of Dream Center Academy Christian School,

What a joy it is to share this Annual Report as it gives us the opportunity to inform you of the accomplishments, we were able to do in the 2025 – 2026 School Year. Here are some highlights:

The 2025 – 2026 school year began August 20th with 30 students. May 2024, we have 29 students enrolled. \* On October 1, 2025 we had to move the school due to mold being in the church. We moved to 2503 West Muhammad Ali Blvd. \* Junior Achievement - Students participated in the Junior Achievement: More Than Money. \* SSoE Magnet Program classes have been very successful as students have continued to develop their STEM skills and technology knowledge through coding and 3D design. \* Students will begin practicing for the Iowa State Testing May 4<sup>th</sup> - 8<sup>th</sup>. \* Testing May 11<sup>th</sup> – 15<sup>th</sup>. \* On March 17, 2026 we located a building to purchase at 2509 Portland Avenue. A contract has been put on this property. \* DCACS is partnering with George and Mary Lee Duthie Foundation, Caldwell Tanks/PRELOAD, Southeast Christian Missions, Zoeller Pump Company, Heuser Hearing Institute, Speed School of Engineering, Kosair for Kids, Sherman Carter Barnhart Architects, Clark & Osborne Tool and Die Supplies, and a host of other philanthropist and Kingdom Investors.

The following is an overview of Dream Center Academy Christian School income and expenses for 2025 (1/1/2025 – 12/31/2025) as reflected on our IRS 990.



### Board of Directors

Nick Gardner – Board Chair

Richie Gimmel – Treasurer

Anthony Summers – Board Member

### Advisory Board

Moe Lundrigan

Butch Martin

### 2025

**Total Revenue: \$ 465,489**

Program Expenses \$504,330

Administrative Expenses \$43,664

Fundraising Expenses \$29,539

**Total Year End Net Assets: \$840,758**